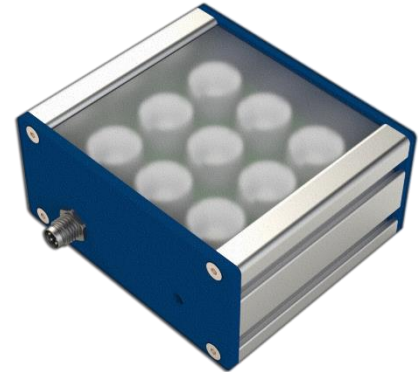


PRODUCT HIGHLIGHTS

- ✓ High uniformity
- ✓ Reverse polarity protection
- ✓ Superior light intensity
- ✓ Light intensity adjustable
- ✓ Built-in driver & trigger



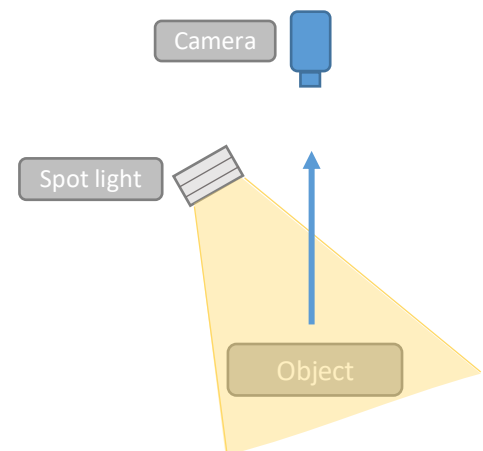
GENERAL SPECIFICATIONS

Specifications	SL09
Power supply	24 Vdc
Max. current	0.45 Amp/0.35
Connector	M8 4-pin
Size	84x74x40mm
Light window area	64.13x67.50mm
Intensity control	5-24V active High
Working temperature	0-50 °C

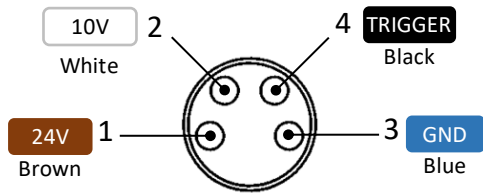
APPLICATIONS

This lighting is designed to directly project the light to the object to be inspected highlighting the textures and producing contrast so that any imperfection produces a clear shadow.

- Locate or measure outside dimensions
- Illuminate flat, diffused surfaces
- Product defect inspection
- Label inspection and placement verification
- Non-diffuse incident (front) lighting



WIRING INFORMATION



Connector front view

PIN	FUNCTION	WIRE COLOR
1	24 V	Brown
2	DIMMER *	White
3	GND	Blue
4	TRIGGER *	Black

MOUNTING

MV Lighting recommends the **Drop-in T-nuts** for channel 5 to mount a SLO9 spot light.



- All images are representative only, by way of reference.
- The design and specifications of this product are subject to change without notification for product improvement
- The total or partial reproduction of this document is prohibited without the express permission of the owner.