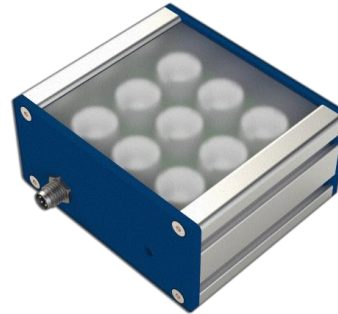


PRODUCT HIGHLIGHTS

- ✓ High uniformity
- ✓ High intensity
- ✓ Reverse polarity protection
- ✓ Built-in driver & trigger
- ✓ Optional built-in dimmer



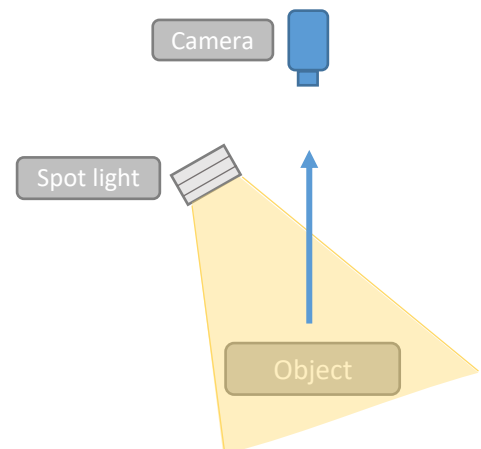
GENERAL SPECIFICATIONS

Specifications	SL09
Power supply	24Vdc
Max. current	0.45 Amp
Connector	M8 4-pin
Size	84x74x40mm
Light window area	64.13x67.50mm
Trigger	24V active high
Working temperature	0-50 °C

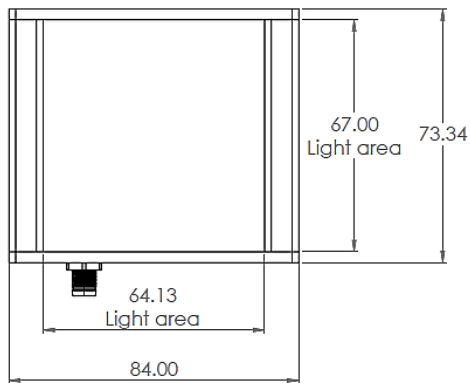
APPLICATIONS

This lighting is designed to directly project the light to the object to be inspected highlighting the textures and producing contrast so that any imperfection produces a clear shadow.

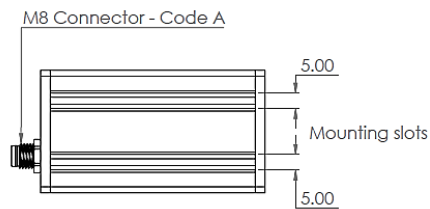
- Locate or measure outside dimensions
- Illuminate flat, diffused surfaces
- Product defect inspection
- Label inspection and placement verification
- Non-diffuse incident (front) lighting



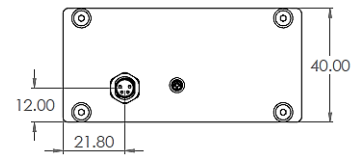
MECHANICAL SPECIFICATIONS



TOP VIEW



SIDE VIEW



FRONT VIEW

Dimensions are in millimeters

PART NUMBER KEY

SL09- -

COLOR **LENS** **WINDOW** **CONTROL**

W57 **625** **014** = 14° T= Transparent **Leave blank** for no built-in dimmer
530 **470** **045** = 45° S= Semi-diffuse **D**= Built-in dimmer
850 **O**= Opaline

Part Number Example:

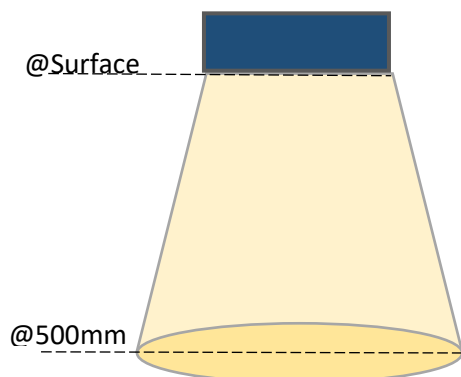
SL09-625-014S

Spot light, Red, Semi-diffuse

SL09-W57-045TD

Spot light, White 5700K, Transparent, Dimmer

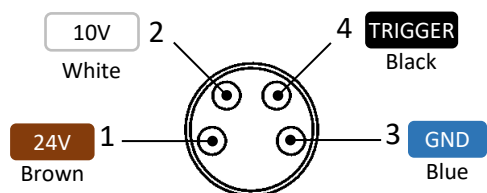
LIGHT PATTERNS



DISTANCE	ILLUMINATION INTENSITY (LUX)
Surface	169,700
500mm	29,500

Illuminance measurement taken on White Light

WIRING INFORMATION



Connector front view

PIN	FUNCTION	WIRE COLOR
1	24 V	Brown
2	DIMMER *	White
3	GND	Blue
4	TRIGGER *	Black

MOUNTING

MV Lighting recommends the **Drop-in T-nuts** for channel 5 to mount a SLO9 spot light.



- All images are representative only, by way of reference.
- The design and specifications of this product are subject to change without notification for product improvement
- The total or partial reproduction of this document is prohibited without the express permission of the owner.

"mvlighting" is a commercial brand of company "ALT INGENIERÍA INDUSTRIA Y TECNOLOGÍA SA DE CV"