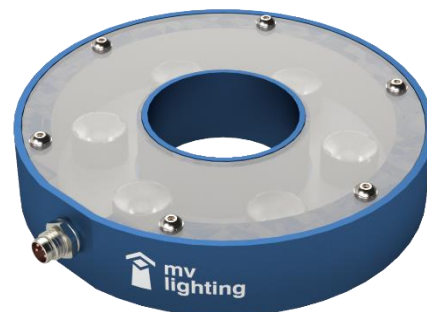


## PRODUCT HIGHLIGHTS

- ✓ High uniformity
- ✓ Reverse polarity protection
- ✓ High light intensity
- ✓ Built-in trigger



## GENERAL SPECIFICATIONS

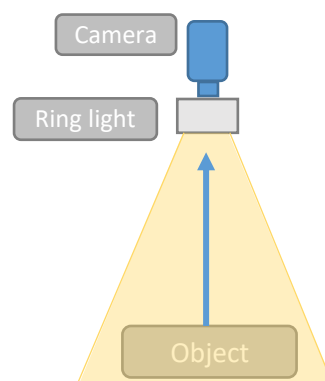
Specifications	RL115
Power supply	24 Vdc
Max. current	0.42 A
Connector	M8 3-pin
Size (Outside diameter)	Ø 115 mm
Working temperature	0-50 °C

## APPLICATIONS

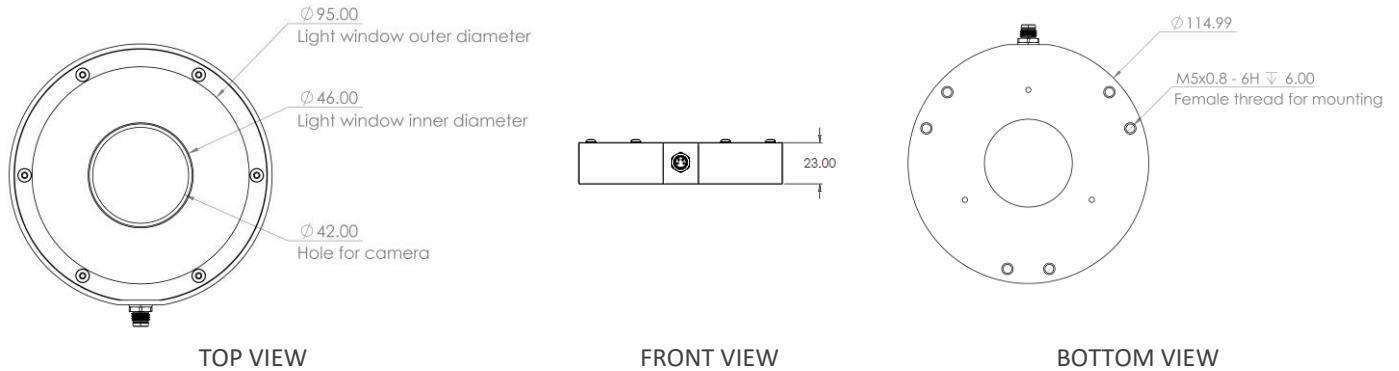
This lighting can be used for a wide range of imaging tasks. Ring lighting is a common lighting type covering a broad range of applications due to its versatility

Application examples:

- Illuminates flat, diffuse surfaces
- Inspection of circular objects (packaging, washing machines)
- Label inspection

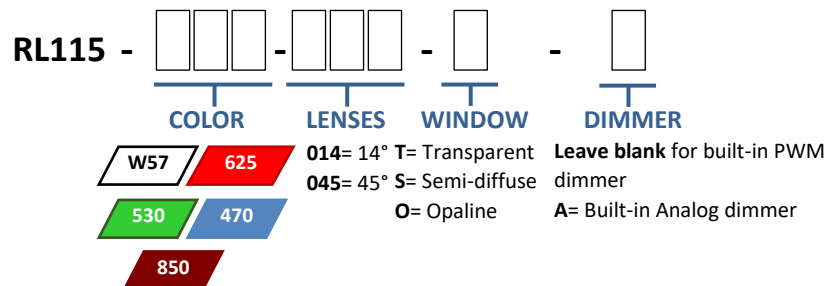


## MECHANICAL SPECIFICATIONS



Dimensions are in millimeters

## PART NUMBER KEY



### Part Number Example:

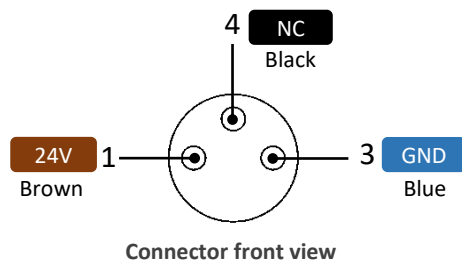
#### RL115-625-014-S

Ring light,  $\varnothing_{EXT}$  115 mm, Red, 14°, Semi-diffuse, Built-in PWM dimmer.

#### RL115-W57-045-S-A

Ring light,  $\varnothing_{EXT}$  150 mm, White, 45°, Semi-diffuse, Built-in Analog dimmer.

## WIRING INFORMATION

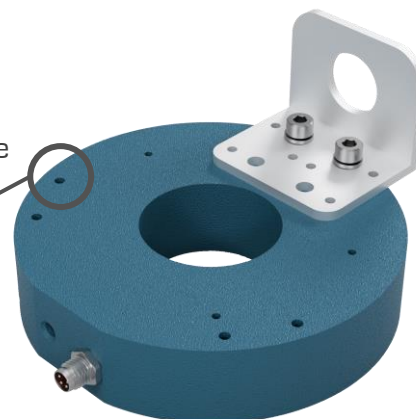


PIN	FUNCTION	WIRE COLOR
1	24 V	Brown
3	GND	Blue
4	TRIGGER	Black

## MOUNTING

MV Lighting recommends the **M5x10 screws** to mount a RL115 ring light.

M5x0.8 - 6H ↓ 8.00 Female  
thread for mounting



- All images are representative only, by way of reference.
- The design and specifications of this product are subject to change without notification for product improvement
- The total or partial reproduction of this document is prohibited without the express permission of the owner.

"mvlighting" is a commercial brand of company "ALT INGENIERÍA INDUSTRIA Y TECNOLOGÍA SA DE CV"