

PRODUCT HIGHLIGHTS

- ✓ High intensity & uniformity
- ✓ Super wide light projection angle
- ✓ Diffuse light
- ✓ Available in three standard lengths
- ✓ Special sizes in 250mm increments.
- ✓ Built-in driver & trigger & PWM dimmer
 - Optional Built-in Analog dimmer



GENERAL SPECIFICATIONS

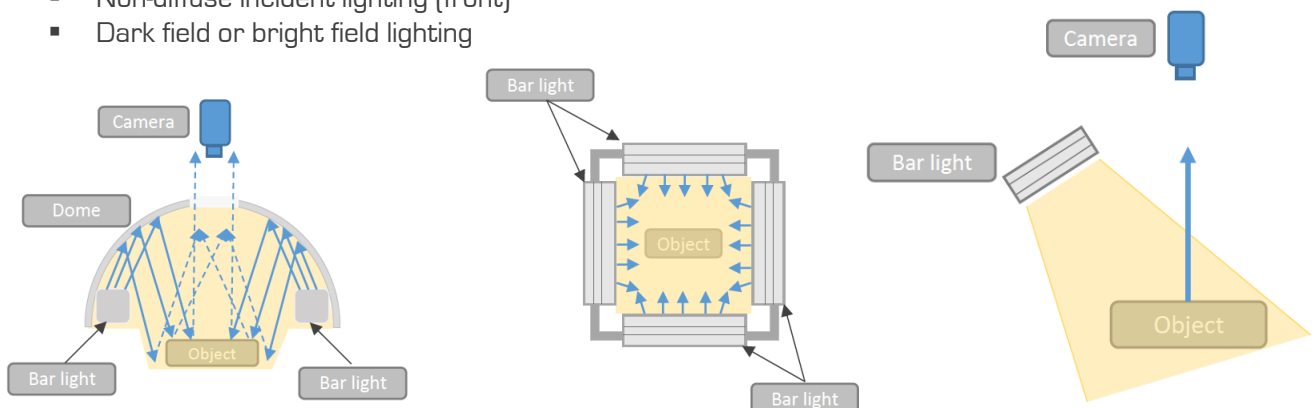
Specifications	BL0250	BL0500	BL0750
Power supply	24 Vdc		
Max. current	0.5 Amp (White)	1 Amp (White)	1.5 Amp (White)
Connector	M8 3-pin		
Length	250 mm	500 mm	750 mm
Light window area	248x28.54 mm	494x28.54 mm	741x28.54 mm
Working temperature	0-50 °C		

APPLICATIONS

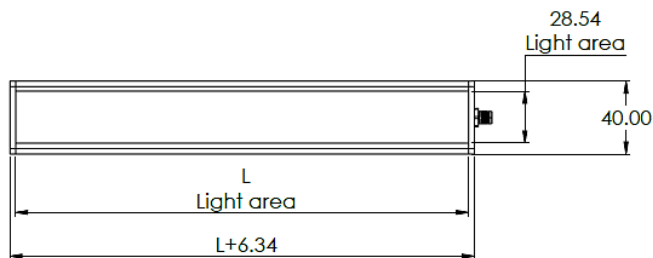
Useful for both dark fields (creating shadows and mirror reflections) and bright field lighting, adjustments for operating distances and the angle provides good image contrast on diffuse surfaces.

Application examples:

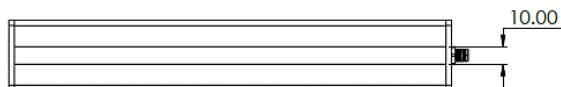
- Locate or measure external dimensions
- Product defect inspection
- Label placement verification
- Non-diffuse incident lighting (front)
- Dark field or bright field lighting



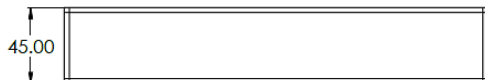
MECHANICAL SPECIFICATIONS



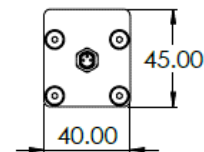
TOP VIEW



BOTTOM VIEW



SIDE VIEW



FRONT VIEW

Dimensions are in millimeters

Model	L	W
BL0250	248	28.54
BL0500	494	28.54
BL0750	741	28.54

PART NUMBER KEY

BL - - -

LENGTH **COLOR** **WINDOW** **DIMMER**

0250 = 250 mm
0500 = 500 mm
0750 = 750 mm
250 mm increments

W57

T= Transparent
S= Semi-diffuse
O= Opaline

Leave blank for built-in PWM dimmer
A= Built-in Analog dimmer

Part Number Example:

BL0250-W57-T

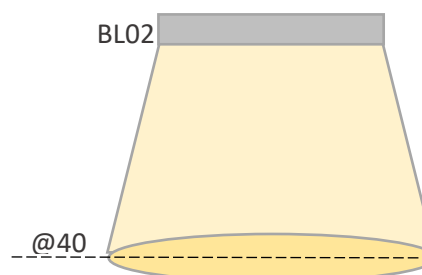
Bar light 250 mm, White, Transparent window, Built-in driver & trigger & PWM dimmer.

BL1500-625-S-A

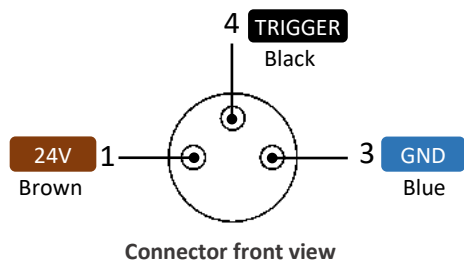
Bar light 1500 mm, Red, Semi-diffuse window, Built-in driver & trigger & Analog dimmer.

LIGHT PATTERNS

DISTANCE	ILLUMINATION [Lux]
400 mm	1,360
Measurement taken on White light with opaline window	



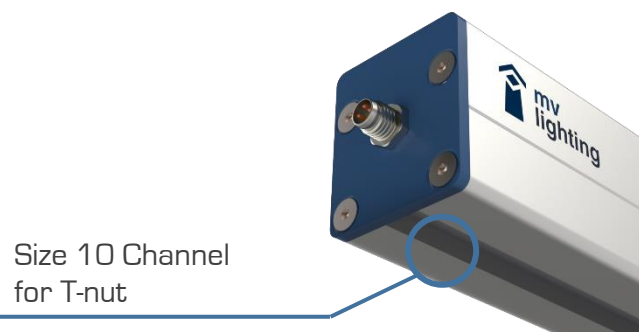
WIRING INFORMATION



PIN	FUNCTION	WIRE COLOR
1	24 V	Brown
3	GND	Blue
4	TRIGGER	Black

MOUNTING

MV Lighting recommends the **Drop-in T-nuts** for channel 10 to mount a BLL bar light.



- All images are representative only, by way of reference.
- The design and specifications of this product are subject to change without notification for product improvement
- The total or partial reproduction of this document is prohibited without the express permission of the owner.

“mvlighting” is a commercial brand of company “ALT INGENIERÍA INDUSTRIA Y TECNOLOGÍA SA DE CV”